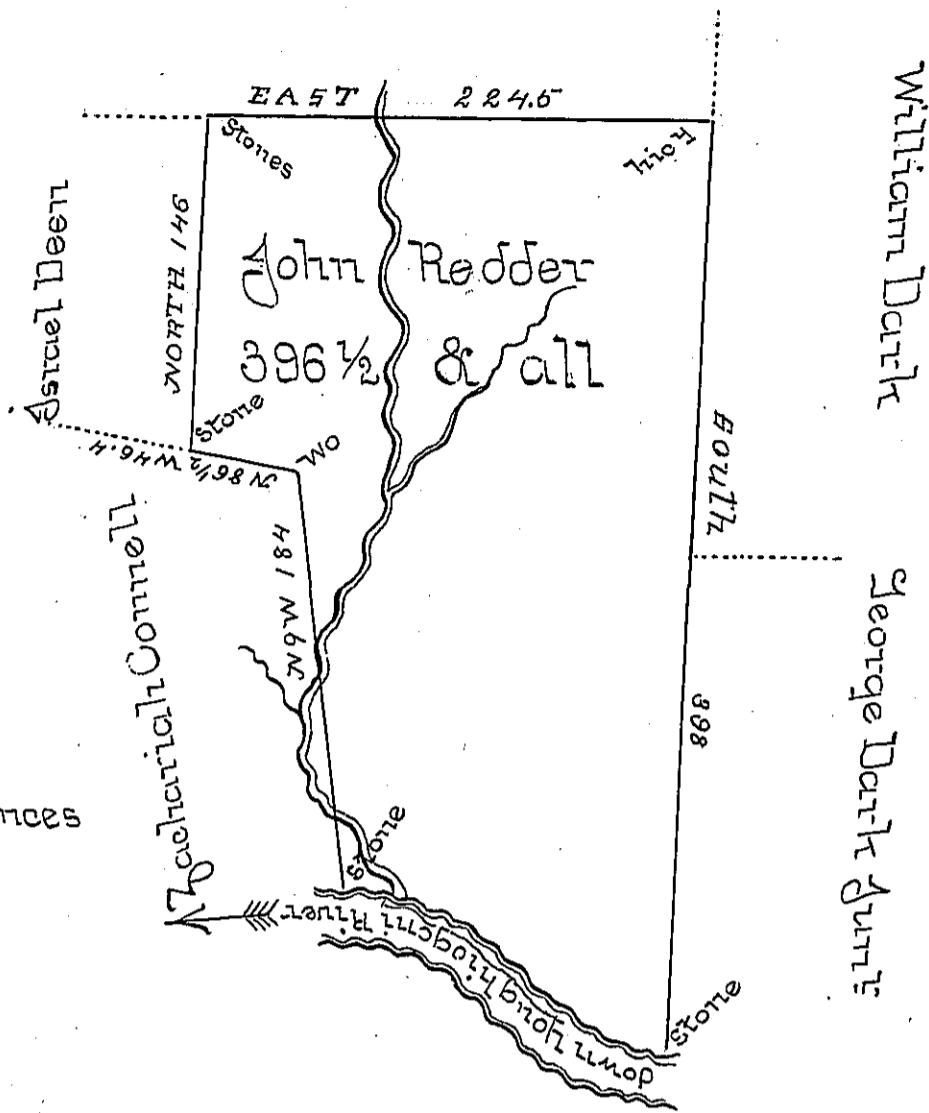


Charles Foster



Courses and Distances
down the River

- N 59 W 30.6
- N 52 1/2 W 93.
- N 74 W 20.2
- S 75 W 33.6

Situate adjoining the North Side of Youghiogani River about
two Miles above the Salt Works in Bullskin Township Fa-
yette County and Surveyed the 22^d day of November 1794.
In pursuance of a Warrant dated the fourth day of Feb-
ruary 1794.

Alexander M^c Bean Deputy

To Daniel Brodhead Esquire
Surveyor General

IN TESTIMONY that the above is a copy of the original remaining on file in the
Department of Internal Affairs of Pennsylvania, made con-
formably to an Act of Assembly approved the 16th day of
February, 1833, I have hereunto set my Hand and caused
the Seal of said Department to be affixed at Harrisburg, this
— second — day of — March — 1897 —

James W. Patton
Secretary of Internal Affairs.